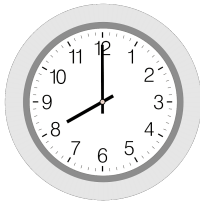


# Mage Math

Name: \_\_\_\_\_

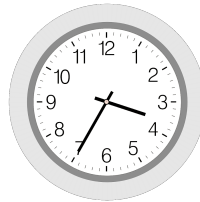
Date: \_\_\_\_\_

1. Andy wakes up at 8 a.m. If he has to leave 1 hour and 30 minutes later for school, what time does he leave?



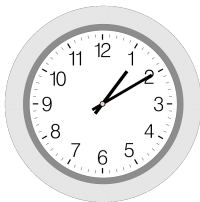
**9:30** a.m.

4. Jane and her mom leave at 3:35 p.m. to adopt a dog. They return home 50 minutes later with a new dog! What time do they arrive home?



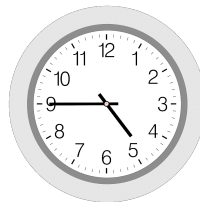
**4:25** p.m.

2. Jill eats lunch at 1:10 p.m. for 45 minutes. What time does Jill finish lunch?



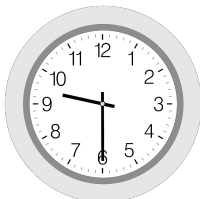
**1:55** p.m.

5. Lenny starts a 2 hour movie at 4:45 p.m. What time does he finish the movie?



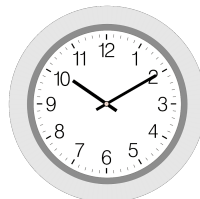
**6:45** p.m.

3. Mr. Blackstone's class takes a field trip to see a play that starts at 9:30 a.m. The play is 2 hours and 10 minutes long. What time does the play end?



**11:40** a.m.

6. Anne's sister starts her nap at 10:10 a.m. She sleeps for 50 minutes. What time does she wake up?



**11:00** a.m.